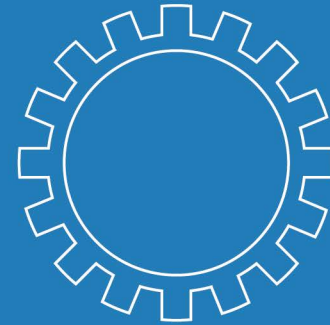


HANDA

焊达·机械



HD-10 POSITIONER

HD-10 welding positioner are designed to give maximum positioning flexibility by using the tilting and rotation of the table to manipulate the work piece into the appropriate angle for welding on small valve and flang as manufacturing requirements

Feature

- ◆ For annular welding, cutting, polishing and assembly.
- ◆ Easy to set up a small welding center equipped with chuck, torch holders and stop cone.
- ◆ DC infinitely variable speed control system.



Scope of Delivery

- ◆ Main body frame: 1 pc
- ◆ KC-65 chuck: 1 pc
- ◆ Electrical cabinet: 1 pc
- ◆ Foot switch: 1pc

Specification

Model	HD-10
Horizontal Capacity	10kg
Vertical Capacity	5kg
Rotation Speed	2-19r/min
Tilt Angle Range	0° -90°/ hand wheel
Table Diameter	180mm
Height of Table	232mm
Motor Power	15W
Weight	10kg
Application Chucks	KC-65
Input Voltage	1PH 110V 50~60HZ

HD-30/50 POSITIONER

HD-30 and HD-50 welding positioners are designed to give maximum positioning flexibility by using the tilting and rotation of the table to manipulate the work piece into the appropriate angle for welding on small valve and flang as manufacturing requirements

Feature

- ◆ For annular welding, cutting, polishing and assembly.
- ◆ Easy to set up a small welding center equipped with chuck, tracks, torch holders or stop cone.
- ◆ DC infinitely variable speed control system.
- ◆ Rotation time relay function optional.
- ◆ Welder linked auto welding control function.



Scope of Delivery

- ◆ Main body frame: 1 pc
- ◆ Electrical cabinet: 1 pc
- ◆ Foot switch: 1pc

Specification

Model	HD-30	HD-50
Horizontal Capacity	30kg	50kg
Vertical Capacity	20kg	30kg
Rotation Speed	0.5-5r/min	0.5-5r/min
Tilt Angle Range	0° -90°/ hand wheel	0° -90°/ hand wheel
Table Diameter	315mm	360mm
Height of Table	339mm	425mm
Motor Power	80W	120W
Weight	28	32
Applicative Chucks	KD-125/200/300	KD-125/200/300
Input Voltage	1PH 110V 50~60HZ	1PH 110V 50~60HZ

HD-100/200/300 POSITIONER

Designed to give maximum positioning flexibility by using the tilting and rotation of the table to manipulate the work piece into the appropriate angle for welding or to position accurately for assembly and manufacturing requirements. These very versatile handling tools enable welding to be carried out in the optimum positions to benefit the quality of the work.

Feature

- ◆ For annular welding, cutting, polishing and assembly.
- ◆ Easy to set up a small welding center equipped with chuck, tracks, torch holders or stop cone.
- ◆ DC infinitely variable speed control system.
- ◆ Rotation time relay function optional.
- ◆ Welder linked auto welding control function.

Scope of Delivery

- ◆ Main body frame: 1 pc
- ◆ Electrical cabinet: 1 pc
- ◆ Foot switch: 1pc

Specification

Model	HD-100	HD-200	HD-300
Horizontal Capacity	100kg	200kg	300kg
Vertical Capacity	50kg	100kg	150kg
Rotation Speed	0.05-0.5r/min	0.05-0.5r/min	0.2-2.5r/min
Tilt Angle Range	0° -90°/ hand wheel	0° -90°/ hand wheel	0° -90°/ hand wheel
Table Diameter	400mm	400mm	500mm
Height of Table	500mm	500mm	600mm
Table Hole Size	45mm	45mm	90mm
Motor Power	120W	180W	220W
Weight	75kg	80kg	110kg
Applicative Chucks	KD-300/400	KD-200/300/400	KD-300/400
Input Voltage	1ph 220v 50~60hz	1ph 220v 50~60hz	1ph 220v 50~60hz



LIGHT DUTY POSITIONER

HD-600 POSITIONER

HD-600 welding positioner are designed to give maximum positioning flexibility by using the tilting and rotation of the table to manipulate the work piece into the appropriate angle for welding and assembly requirements.



Feature

- ◆ For annular welding, cutting, polishing and assembly.
- ◆ Easy to set up a welding center equipped with chuck, torch holders and support rolls.
- ◆ AC VFD speed control system with a high frequency defensed inverter.

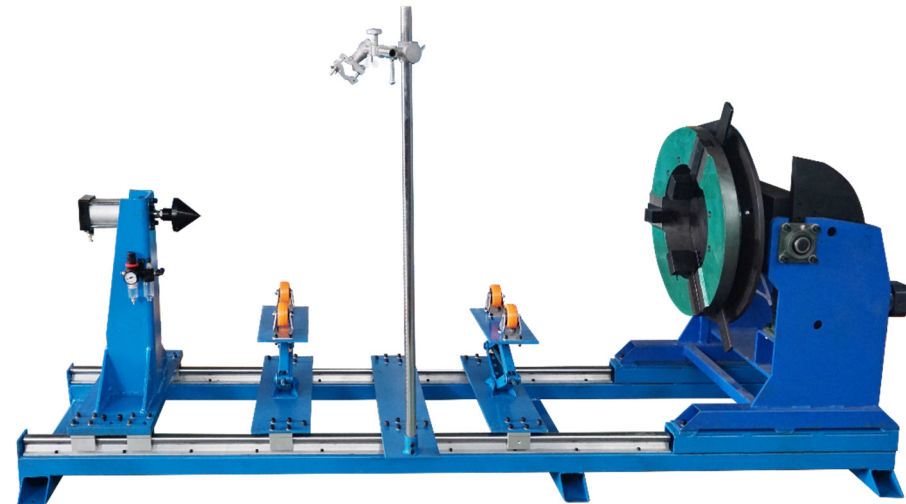
Scope of Delivery

- ◆ Main body frame: 1 pc
- ◆ Electrical cabinet: 1 pc
- ◆ Remote control panel: 1pc
- ◆ Foot switch: 1pc

Specification

Model	HD-600
Horizontal Capacity	600kg
Vertical Capacity	300kg
Rotation Speed	0.1-1r/min
Tilt Angle Range	0° -90° motorized
Tilting Speed	0.4rpm
Table Diameter	650mm
Rotation Motor Power	0.37kW
Tilting Motor Power	0.55kW
Applicative Chucks	KD-400/500/600
Input Voltage	3PH 380-460V 50~60HZ

Welding Center Application



CNC-100/200/300 POSITIONER

Designed to give maximum positioning flexibility by using the tilting and rotation of the table to manipulate the work piece into the appropriate angle for welding or to position accurately for assembly and manufacturing requirements.

Feature

- ◆ For annular welding, cutting, polishing and assembly.
- ◆ Easy to set up a small welding center equipped with chuck, tracks, torch holders or stop cone.
- ◆ Micro computer program accurately control system.
- ◆ Program specify accurate delay time and angle of rotation.

Scope of Delivery

- ◆ Main body frame: 1 pc
- ◆ Electrical cabinet: 1 pc
- ◆ Foot switch: 1pc
- ◆ Remote control panel: 1 pc (optional)

Specification

Model	CNC-100	CNC-200	CNC-300
Horizontal Capacity	100kg	200kg	300kg
Vertical Capacity	50kg	100kg	150kg
Rotation Speed	0.05-9/min	0.05-5r/min	0.05-5r/min
Tilt Angle Range	0° -90°/ hand wheel	0° -90°/ hand wheel	0° -90°/ hand wheel
Table Diameter	400mm	400mm	500mm
Height of Table	500mm	500mm	600mm
Table Hole Size	45mm	45mm	90mm
Motor	86 Stepper	86 Stepper	86 Stepper
Weight	80kg	85kg	120kg
Applicative Chucks	KD-200/300/400	KD-200/300/400	KD-300/400
Input Voltage	1ph 220v 50~60hz	1ph 220v 50~60hz	1ph 220v 50~60hz



LIGHT DUTY POSITIONER

HDNC-100/200/300 POSITIONER

Designed for automatically controlling on work-plate rotation motion, welding start/stop, welding gun lift/ down and welding seam oscillation.

To give maximum positioning flexibility by using the tilting and rotation of the table to manipulate the work piece into the appropriate angle for welding or to position accurately for assembly and manufacturing requirements.

Feature

- ◆ For annular welding, cutting, polishing and assembly.
- ◆ Easy to set up an automatic welding center equipped with chuck, tracks, torch holders, seam oscillator and stop cone.
- ◆ PLC & touch screen accurately control system.
- ◆ Program specify accurate delay time, welding angle and sections of rotation.
- ◆ Welding machine arc star/stop control or oscillator control extended connectors.

Scope of Delivery

- ◆ Main body frame: 1 pc
- ◆ Electrical cabinet: 1 pc
- ◆ Remote control panel: 1 pc (optional)

Specification

Model	HDNC-100	HDNC-200	HDNC-300
Horizontal Capacity	100kg	200kg	300kg
Vertical Capacity	50kg	100kg	150kg
Rotation Speed	0.05-9/min	0.05-5r/min	0.05-5r/min
Tilt Angle Range	0° -90°/ hand wheel	0° -90°/ hand wheel	0° -90°/ hand wheel
Table Diameter	400mm	400mm	500mm
Height of Table	500mm	500mm	600mm
Table Hole Size	45mm	45mm	90mm
Motor	86 Stepper	86 Stepper	86 Stepper
Weight	85kg	90kg	130kg
Applicative Chucks	KD-200/300/400	KD-200/300/400	KD-300/400
Input Voltage	1ph 220v 50~60hz	1ph 220v 50~60hz	1ph 220v 50~60hz



HD HEAVY DUTY POSITIONER

To give maximum positioning flexibility by using the tilting and rotation of the table to manipulate the work piece into the appropriate angle for welding or to position accurately for assembly and manufacturing requirements.

HD series heavy-duty welding positioners are with capacities ranging for 800kg to 50,000kg.

Feature

- ◆ For annular welding, cutting, polishing and assembly.
- ◆ Easy to set up a welding center together with welding manipulator or supporting rolls.
- ◆ AC VFD speed control system with a high frequency definded inverter.

Scope of Delivery

- ◆ Main body frame: 1 pc
- ◆ Electrical cabinet: 1 pc
- ◆ Remote control panel: 1pc
- ◆ Foot switch: 1pc

Specification

Model	HD-800	HD-1500	HD-3000	HD-5000	HD-10K	HD-20K	HD-30K
Loading Capacity (kg)	800	1500	3000	5000	10K	20K	30K
Table Diameter (mm)	Ø1000	Ø1200	Ø1400	Ø1400	Ø1500	Ø2000	Ø3000
Rotation Speed (rpm)	0.075-0.75	0.05-0.5	0.05-0.5	0.05-0.5	0.05-0.5	0.04-0.4	0.03-0.3
Rotation Power (kw)	0.55	0.75	1.1	1.5	3	5.5	7.5
Tilt Angle (°)	0.75	1.1	2.2	3	4	11	15
Height of Table	0-135°	0-135°	0-135°	0-135°	0-135°	-45-90°	-45-90°
Max Rotation Dia. (mm)	Ø1350	Ø1650	Ø2200	Ø2300	Ø2500	Ø3500	Ø4000
Max. Gravity (mm)	200	250	300	300	300	500	500
Max. Eccentricity (mm)	150	200	200	200	200	200	200



HDY HYDRAULIC ELEVATION POSITIONER

HDY series hydraulic elevating welding positioners are with capacities ranging for 1,000kg to 20,000kg. These hydraulic positioners are with rotation motorized, elevating and tilting motions adjustment by hydraulic cylinder enable welding to be carried out in the optimum positions to fit the quality of the work.

Feature

- ◆ For annular welding, cutting, polishing and assembly.
- ◆ AC VFD speed control system with a high frequency defended inverter.
- ◆ Italy Oiltec pump station and valves.
- ◆ US Parker oil pipes and Eat joints.
- ◆ Full adjustable tilting and elevating motions hydraulically to meet complex welding and assembly requirements.

Scope of Delivery

- ◆ Main body frame: 1 pc
- ◆ Hydraulic system: 1 group
- ◆ Electrical cabinet: 1 pc
- ◆ Remote control panel: 1pc
- ◆ Foot switch: 1pc

Specification

Model	HDY-1000	HDY-2000	HDY-3000	HDY-5000	HDY-10K	HDY-20K
Loading Capacity (kg)	1000	2000	3000	5000	10K	20K
Table Diameter (mm)	Ø900	Ø1000	Ø1400	Ø1500	Ø2000	Ø2200
Rotation Speed (rpm)	0.1-1	0.075-0.75	0.05-0.5	0.05-0.5	0.05-0.5	0.04-0.4
Rotation Power (kw)	0.37	0.55	0.75	1.1	1.5	2.2
Tilt Power (kw)	0.55	0.75	1.1	2.2	3	4
Tilt Angle	0-135°	0-135°	0-135°	0-120°	0-120°	0-120°
Tilt Center Height (mm)	750-1200	850-1300	1000-1600	1000-1600	1100-1700	750-1200
Max. Gravity (mm)	200	200	200	200	300	350
Max. Eccentricity (mm)	100	100	150	200	200	200



HDS MANUAL ELEVATION POSITIONER

To give maximum positioning flexibility by using the tilting and rotation of the table to manipulate the work piece into the appropriate angle for welding or to position accurately for assembly and manufacturing requirements.

These positioners are with rotation and tilting motions adjustment by motorized enable welding to be carried out in the optimum positions to benefit the quality of the work.

Feature

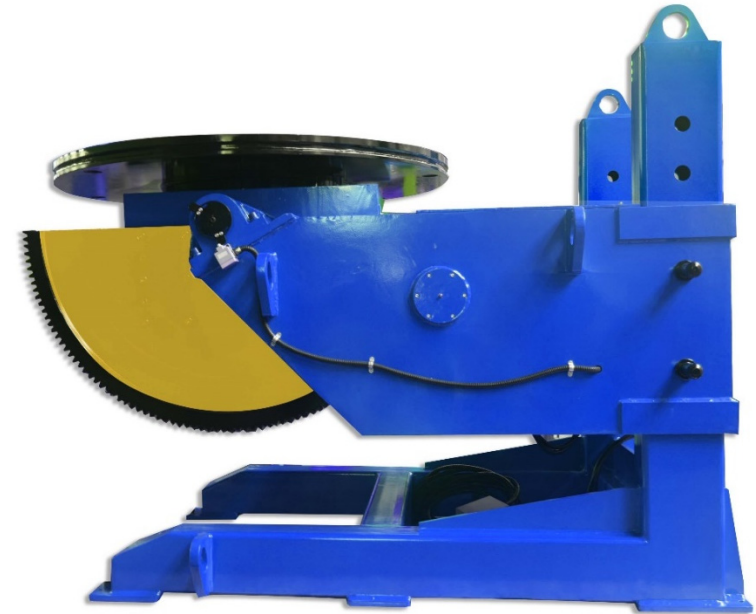
- ◆ For annular welding, cutting, polishing and assembly.
- ◆ Easy to set up a welding center together with welding manipulator or supporting rolls.
- ◆ AC VFD speed control system with a high frequency defensed inverter.
- ◆ Adjustable tilt center height to meet bigger size welding and assembly requirements.

Scope of Delivery

- ◆ Main body frame: 1 pc
- ◆ Electrical cabinet: 1 pc
- ◆ Remote control panel: 1pc
- ◆ Foot switch: 1pc

Specification

Model	HDS-600	HDS-1200	HDS-2000	HDS-3000	HDS-5000	HDS-10K
Loading Capacity (kg)	600	1200	2000	3000	5000	10K
Table Diameter (mm)	Ø900	Ø1000	Ø1200	Ø1400	Ø1500	Ø1800
Rotation Speed (rpm)	0.1-1	0.075-0.75	0.075-0.75	0.05-0.5	0.05-0.5	0.05-0.5
Rotation Power (kw)	0.37	0.55	0.75	1.1	1.5	2.2
Tilt Power (kw)	0.55	0.75	1.1	2.2	3	4
Tilt Angle	0-135°	0-135°	0-135°	0-135°	0-135°	-45-90°
Tilt Center Height (mm)	600-1400	700-1500	790-1690	1000-1600	1150-2450	600-1400
Max. Gravity (mm)	200	200	200	200	300	350
Max. Eccentricity (mm)	100	100	150	200	200	200



HDSL L-TYPE ELEVATION POSITIONER

HDSL series hydraulic elevating welding positioners are with capacities ranging for 1,000kg to 20,000kg. These hydraulic positioners are with rotation motorized, elevating and tilting motions adjustment by hydraulic cylinder enable welding to be carried out in the optimum positions to benefit the quality of the work.

Feature

- ◆ Specialized for mechanical engineering welding and assembly.
- ◆ AC VFD speed control system with a high frequency defened inverter.
- ◆ Italy Oiltec pump station and valves.
- ◆ 3 Axis positions adjustment.
- ◆ Horizontal and vertical double 360 degree rotating supply more working space and position choices.

Scope of Delivery

- ◆ Main body frame: 1 pc
- ◆ Hydraulic system: 1 group
- ◆ Electrical cabinet: 1 pc
- ◆ Remote control panel: 1pc
- ◆ Foot switch: 1pc

Specification

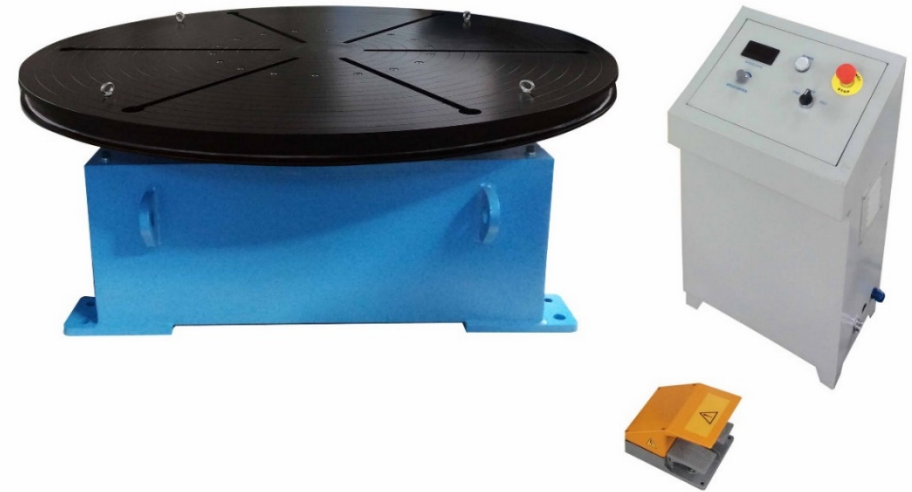
Model	HDSL-500	HDSL-1000	HDSL-2000	HDSL-3000	HDSL-5000	HDSL-10K
Loading Capacity (kg)	500	1000	2000	3000	5000	10K
Table Diameter (mm)	Ø600	Ø900	Ø1000	Ø600	Ø900	Ø1000
Rotation Speed (rpm)	0.1-1	0.1-1	0.1-1	0.05-0.5	0.05-0.5	0.05-0.5
Rotation Power (kw)	0.75	1.1	1.5	1.5	2.2	3
Tilt Power (kw)	1.5	2.2	2.2	3	4	5.5
Tilt Angle	360°	360°	360°	360°	360°	360°
Hydraulic Vertical stroke (mm)	500	600	700	800	1200	1500



HDJ WELDING TURN TABLE

Specifically designed for provide rotation of the table to manipulate the heavy-duty work piece into the appropriate angle for welding or to position accurately for assembly and manufacturing requirements.

HDJ series welding turntables are with capacities ranging for 1ton to 30ton.



Feature

- ◆ Specialized for mechanical engineering welding and assembly.
- ◆ AC VFD speed control system with a high frequency defened inverter.
- ◆ Servo motor or stepper motor with PLC control system optional.
- ◆ Low height design.

Scope of Delivery

- ◆ Main body frame: 1 pc
- ◆ Electrical cabinet: 1 pc
- ◆ Remote control panel: 1pc
- ◆ Foot switch: 1pc

Specification

Model	HDJ-1000	HDJ-2000	HDJ-3000	HDJ-5000	HDJ-10K	HDJ-20K	HDJ-30K
Loading Capacity (kg)	1000	2000	3000	5000	10K	20K	30K
Table Diameter (mm)	Ø1000	Ø1200	Ø1400	Ø1600	Ø1800	Ø2000	Ø2200
Rotation Speed (rpm)	0.1-1	0.1-1	0.1-1	0.05-0.5	0.05-0.5	0.04-0.4	0.04-0.4
Rotation Power (kw)	0.37	0.55	0.75	1.1	1.5	3	4
Max. Eccentricity (mm)	200	250	300	300	300	300	300
Table height (mm)	415	415	515	520	600	700	750

PIPE ROTATOR

HDTR SERIES PIPE ROTATOR

Specifically designed to rotate pipe for circular welding, cutting, and painting jobs. HDTR series pipe rotators are with capacities ranging for 1ton to 3ton.

Feature

- ◆ Device for the turning and positioning of small tanks and cylindrical workpieces.
- ◆ Easy to set up a small welding center by means of a torch holder under linking control.
- ◆ Equipped with high performance PU-coated metal rollers provide stable running.
- ◆ DC/AC infinitely variable speed control system.
- ◆ Switch for cw/ ccw rotation, foot switch for start/ stop functions.

Scope of Delivery

- ◆ Main body frame: 1 pc
- ◆ Electrical cabinet: 1 pc
- ◆ Foot switch: 1pc

Specification

Model	HDTR-1000	HDTR-3000
Loading Capacity (kg)	1000	3000
Pipe Diameter Range(mm)	∅20-∅800	∅20-∅1500
Rotation Speed (rpm)	80-1600	150-1500
Rotation Power (w)	DC 120	AC 300
Roller Diameter (mm)	∅ 200	∅ 250
Roller Material	Pu	Pu
Power Input	1ph 220V	3ph 380-460V



ZT SERIES SELF-ALIGNING ROTATOR

Specifically designed to rotate tank, pressure vessels, wind-tower for fitting-up and circular welding jobs.
ZT series pipe rotators are with capacities ranging for 5ton to 150ton.

Feature

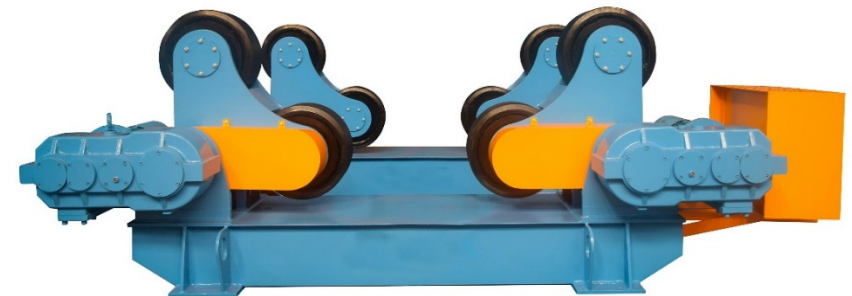
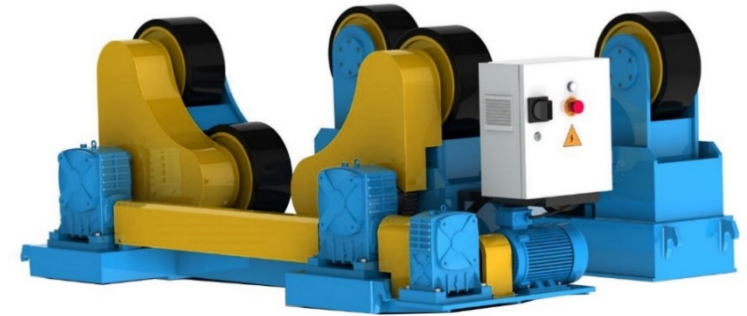
- ◆ Self-aligning adjusts rollers tilt angle to fit vessels with different diameters.
- ◆ Easy to set up a small welding center by means of welding column and boom under linking control.
- ◆ Equipped with high performance PU roller or steel rollers provide stable running.
- ◆ VFD AC infinitely variable speed control system.
- ◆ Remote control panel with switch for cw/ ccw rotation, foot switch for start/ stop functions.

Scope of Delivery

- ◆ Main body frame: 1 pc
- ◆ Electrical cabinet: 1 pc
- ◆ Remote control panel: 1pc

Specification

Model	Load Capacity	Tank Diameter	Roller Size	Roller Material	Rolling Speed	Control	Motor Power
ZT-5	5T	Ø250-Ø2500mm	Ø250x100mm	PU	100-1000mm/min	VFD	0.75kw
ZT-10	10T	Ø320-Ø3200mm	Ø300x120mm	PU	100-1000mm/min	VFD	1.1kw
ZT-20	20T	Ø500-Ø3800mm	Ø350x150mm	PU	100-1000mm/min	VFD	2.2kw
ZT-40	40T	Ø600-Ø4500mm	Ø400x160mm	PU	100-1000mm/min	VFD	3kw
ZT-60	60T	Ø750-Ø5000mm	Ø450x180mm	PU	100-1000mm/min	VFD	4kw
ZT-80	80T	Ø850-Ø5500mm	Ø450x240mm	PU	100-1000mm/min	VFD	2x3kw
ZT-100	100T	Ø1000-Ø6000mm	Ø500x240mm	PU	100-1000mm/min	VFD	2x3kw
ZT-150	150T	Ø1000-Ø6000mm	Ø550x300mm	PU	100-1000mm/min	VFD	2x4kw



KT SERIES ADJUSTABLE ROTATOR

Specifically designed to rotate tank, pressure vessels, wind-tower for fitting-up and circular welding jobs. KT series pipe rotators are with capacities ranging for 2ton to 300ton.

Feature

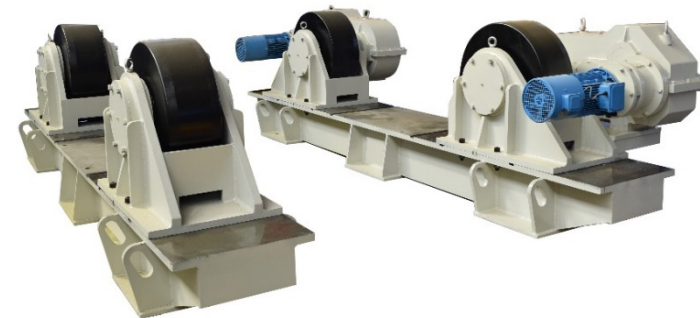
- ◆ Device for the turning and positioning of big tanks and cylindrical workpieces.
- ◆ Easy to set up a small welding center by means of welding column and boom under linking control.
- ◆ Equipped with high performance PU roller or steel rollers provide stable running.
- ◆ VFD AC infinitely variable speed control system.
- ◆ Remote control panel with switch for cw/ ccw rotation, foot switch for start/ stop functions.

Scope of Delivery

- ◆ Main body frame: 1 pc
- ◆ Electrical cabinet: 1 pc
- ◆ Remote control panel: 1pc

Specification

Model	Load Capacity	Tank Diameter	Roller Size	Roller Material	Rolling Speed	Control	Motor Power
KT-2	2T	Ø150-Ø2000mm	Ø200x80mm	PU	100-1000mm/min	VFD	2x0.18kw
KT-5	5T	Ø250-Ø2800mm	Ø250x120mm	PU	100-1000mm/min	VFD	2x0.37kw
KT-10	10T	Ø300-Ø3200mm	Ø300x130mm	PU	100-1000mm/min	VFD	2x0.55kw
KT-20	20T	Ø500-Ø4500mm	Ø350x180mm	PU	100-1000mm/min	VFD	2x1.1kw
KT-40	40T	Ø500-Ø5000mm	Ø400x220mm	PU	100-1000mm/min	VFD	2x1.5kw
KT-60	60T	Ø500-Ø5000mm	Ø450x280mm	PU	100-1000mm/min	VFD	2x2.2kw
KT-80	80T	Ø800-Ø6000mm	Ø450x360mm	PU	100-1000mm/min	VFD	2x3kw
KT-100	100T	Ø800-Ø6000mm	Ø550x400mm	PU	100-1000mm/min	VFD	2x3kw
KT-150	150T	Ø800-Ø6000mm	Ø550x200mm	Steel	100-1000mm/min	VFD	2x4kw
KT-200	200T	Ø800-Ø6500mm	Ø650x250mm	Steel	100-1000mm/min	VFD	2x4kw
KT-300	300T	Ø800-Ø6500mm	Ø700x300mm	Steel	100-1000mm/min	VFD	2x5.5kw



HDYG SERIES PIPE PINCHING ROTATOR

Specifically designed to rotate pipes, tube bends for circular welding, cutting, and grinding jobs.

Feature

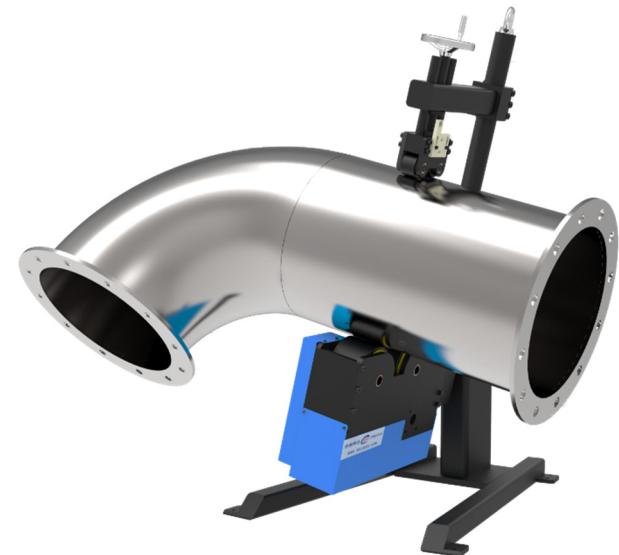
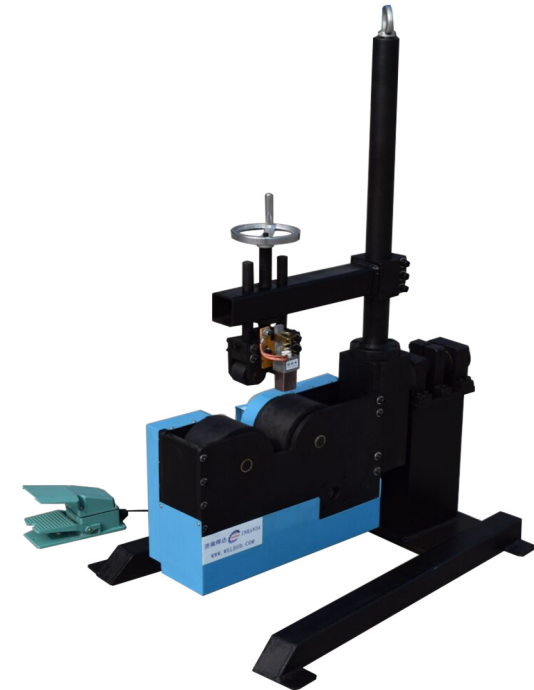
- ◆ Stable and compact construction.
- ◆ Welding, cutting and grinding possible.
- ◆ Clamping of a multitude of pipes, tube elbow and pipes with flange.
- ◆ Fast and precise clamping without jaw chucks.
- ◆ DC infinitely variable speed control system.
- ◆ Switch for cw/ ccw rotation, foot switch for start/ stop function.

Scope of Delivery

- ◆ Main body frame: 1 pc
- ◆ Electrical cabinet: 1 pc
- ◆ Foot switch: 1pc

Specification

Model	HDYG-500
Loading Capacity	300 kg
Pipe Diameter Range	Ø50-Ø500 mm
Rotation Linear Speed	20-4000 mm/min
Rotation Power	DC 200w
Roller Material	Steel
Pressure Locking	Lead-screw with manual wheel
Tilting angle	±90°



LHQ SERIES WELDING COLUMN AND BOOM

Specifically designed to give effective solution on the longitudinal and circular seam welding jobs of pipes, vessels, tube bends, etc.

Feature

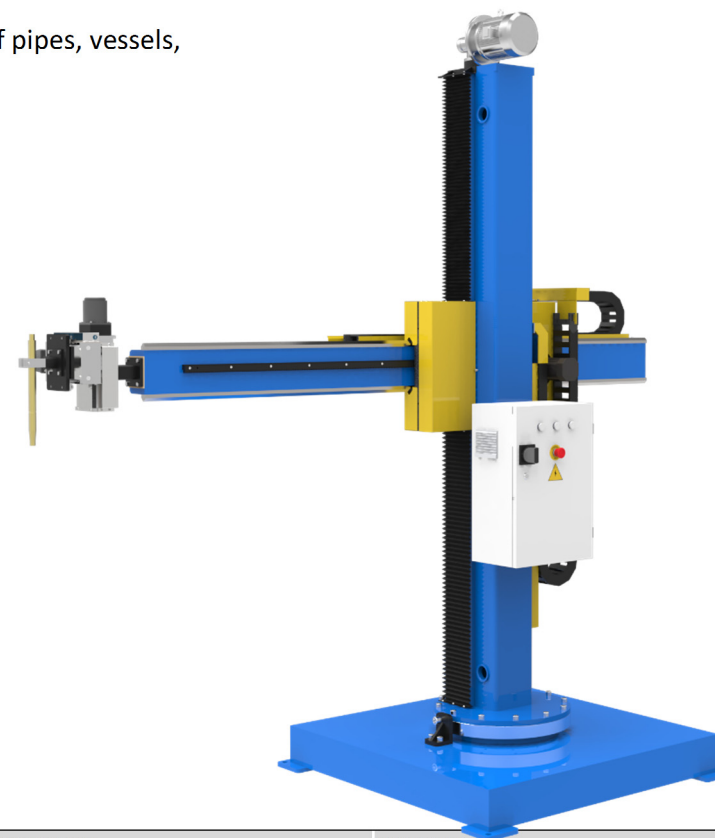
- ◆ Stable and compact construction.
- ◆ TIG/ MIG/MAG Welding friendly supply.
- ◆ Combined with welding turning rolls or positioner/ turntable to setup a welding center without big effort.
- ◆ VFD AC infinitely variable speed control system used on boom movement.
- ◆ Optional movement carriage easy for long tank outside circular seam welding jobs.

Scope of Delivery

- ◆ Column and Beam: each 1 pc
- ◆ Elevating assembly: 1 pc
- ◆ Stationary base or Moveable trolley: 1pc
- ◆ Electric cabinet: 1 pc
- ◆ Operating remote panel: 1pc

Specification

Model	LHQ1010	LHQ1515	LHQ2020	LHQ2525
Vertical Stroke (mm)	1000	1500	2000	2500
Horizontal Stroke (mm)	1000	1500	2000	2500
Lifting Speed (mm/min)	600	600	600	600
Horizontal Speed (mm/min)	100-1000	100-1000	100-1000	100-1000
Column Rotation Angle (°)	360 (manual)	360 (manual)	360 (manual)	360 (manual)
Rotation Base	Stationary	Stationary	Stationary	Stationary
Trolley Moving Type (optional)	Manual	Manual	Manual	Manual
Load Capacity on Beam End (kg)	100	100	50	50



LH SERIES WELDING COLUMN AND BOOM

Specifically designed to give effective solution on the longitudinal and circular seam welding jobs of big pipes, vessels, tube bends, etc.

Feature

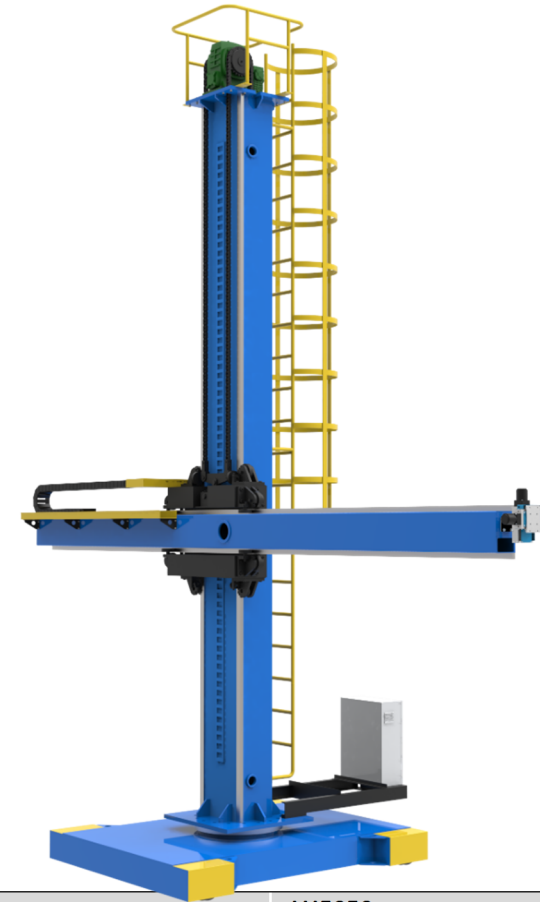
- ◆ Stable construction.
- ◆ TIG/ MIG/MAG/SAW Welding friendly supply.
- ◆ Combined with welding turning rolls or positioner/ turntable to setup a welding center without big effort.
- ◆ VFD AC infinitely variable speed control system used on boom movement.
- ◆ Optional movement carriage easy for long tank outside circular seam welding jobs

Scope of Delivery

- ◆ Column and Beam: each 1 pc
- ◆ Elevating assembly: 1 pc
- ◆ Stationary base or Moveable trolley: 1pc
- ◆ Electric cabinet: 1 pc
- ◆ Operating remote panel: 1pc

Specification

Model	LH2020	LH3030	LH4040	LH5050
Vertical Stroke (mm)	2000	3000	4000	5000
Horizontal Stroke (mm)	2000	3000	4000	5000
Lifting Speed (mm/min)	600	600	600	600
Horizontal Speed (mm/min)	100-1000	100-1000	100-1000	100-1000
Column Rotation Angle (°)	360 (manual or motorized)	360 (manual or motorized)	360 (manual or motorized)	360 (manual or motorized)
Rotation Base	Stationary	Stationary	Stationary	Stationary
Trolley Moving Type (optional)	Motorized	Motorized	Motorized	Motorized
Load Capacity on Beam End (kg)	150	100	75	75



HDQ SERIES WELDING OSCILLATOR



Feature

- ◆ Easy to handle and reliable.
- ◆ Dust proof design holders and stop cone.
- ◆ Linked control to setup automatic welding center with welding positioner and welder.
- ◆ Suitable for MIG, MAG and TIG.

Scope of Delivery

- ◆ Oscillator body: 1 pc
- ◆ Main controller: 1 pc
- ◆ Remote control: 1 pc

Specification

Model	HDQ-L (linear)	HDQ-P (pendulum)
Program storage	10 group	10 group
Timing Duration	0-999.9S	0-999.9S
Swing Speed/ Angle	0-50mm/s	0-10 °/s
Swing range	±25mm	0-90 °
Dwell-time at left/mid/right	0-9.9S	0-9.9S
Weight	3.5kg	3.5kg
Load capacity	5kg	5kg
Input Voltage	1Ph 110/220v	1PH 110/220V

WIRE FEEDER

WF-007A cold filler wire machine is used for argon arc/ laser/ plasma/ brazing welding process, without preheating wire filling equipment for the molten pool.



Feature

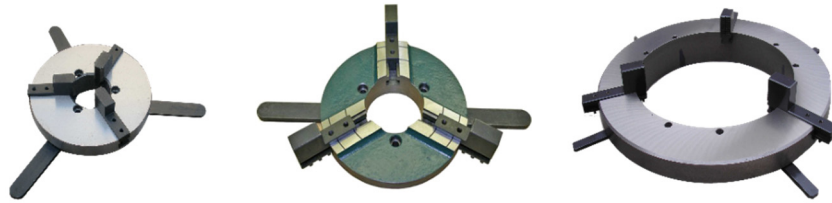
- ◆ Automatic wire filling speed can be adjusted continuously.
- ◆ Drawing wire back, and feeding delay functions.
- ◆ Dual drive wheel feeding system, applicable to a variety of diameter.
- ◆ Pulse feeding function.
- ◆ Various function parameters of independent continuous adjustment.



Specification

Model	Wf-007A
Wire Table Diameter (mm)	305
Wire Diameter (mm)	0.6/ 0.8/ 1.0/ 1.2/ 1.6/ 2
Feeding speed (mm/min)	0-8000
A pulsed wire feeding time (s)	0-10
Pulse pause time (s)	0-10
Time delay starting (s)	0-10
Back to silking time (s)	0-10
Power off time delay (s)	0-5
Step control	4 step
Accuracy of speed	1%

KC/KD WELDING CHUCKS



Feature

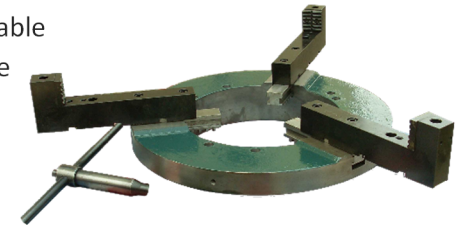
- ◆ Light weight and easy mounting.
- ◆ Get bigger clamping range with extended jaws.
- ◆ Adjusting shaft design easy to adjust clamping range.

Specification

Model	Load Capacity	Clamping Range	Extended Range
KC-65	20kg	∅ 1.5-60mm	*
KC-125	40kg	∅ 2.5-125mm	*
KD-200	80kg	∅ 20-210mm	∅ 5-300mm
KD-300	120kg	∅80-280mm	∅10-400mm
KD-400	240kg	∅120-380mm	∅20-500mm
KD-500	600kg	∅200-500mm	∅40-600mm

KDS WELDING CHUCKS

KDS welding chuck is with big through center hole and high loading capacity design, which is suitable for the clamping requirement of the workpiece with more than 1ton weight.



Model	KDS-600	KDS-750
Load Capacity	1000kg	1200kg
Clamp Range	∅150-620mm	∅380-800mm

KDA WELDING CHUCKS

KDA series welding chuck is easy to operate, which is with features of a large clamp range and strong clamp face to meet the fixture requirements on big and heavy workpieces.



Model	KDA-600	KDA-750
Load Capacity	1200kg	1400kg
Clamp Range	∅85-615mm	∅85-1000mm

PNEUMATIC TIP CONE

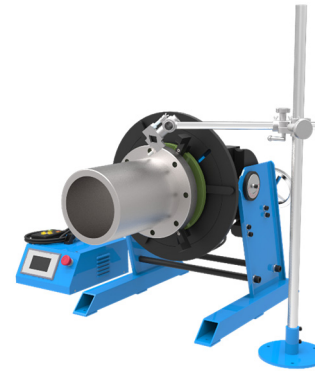
Feature

- ◆ Manual/ Magnetic valve optional.
- ◆ Fast tight and centering rolls.
- ◆ Improve work efficiency and save time on clamping.



WELDING TORCH HOLDER

Manual Torch Holders



KH SERIES SUPPORT BRACKET

Feature

- ◆ Device for support of pipes and cylindrical workpieces
- ◆ Easy to set up an automatic welding center with welding positioner.
- ◆ Infinitely adjustable in height.



Pneumatic Torch Holders



Model	KH-400	KH-600
Load Capacity	400kg	600kg
Height Range	220-450mm	400-550mm
Pipe Diameter range	∅ 40-350mm	∅ 30-600mm
Height adjustment	Manual	Manual

STRAIGHT SEAM WELDING MACHINE HZF

The straight seam welding machine is made with high-quality steel by bending and welding. The main machine is of cantilever structure and keyboard type pneumatic compression structure, which are closely arranged along both sides of the straight seam to ensure that the butt weld is evenly compressed within the entire welding length; The distance between the left and right keys can be adjusted to adapt to the welding of different workpieces.

The cylinder structure ensures sufficient compression force to prevent thermal deformation during welding.

Copper mould is installed in the welding mandrel to provide back gas protection under argon arc welding; According to the processing of cylinder or flat workpiece, different welding processes can achieve the effect of single-sided welding and double-sided forming.

The distance between the welding mandrel and the key pressing finger can be adjusted to meet the welding requirements of different workpieces; The welding gun is driven by servo motor and driven by ball four cylinders. The track surface is grinded, and the walking is stable and the welding is stable and reliable. The welding gun is positioned by pneumatic method and is adjusted by precision cross slide.

All air pipes and cables are placed in the drag chain, which is safe and beautiful.

It can be equipped with laser welding, tig welding, Mig /Maghanjie /Plasma welding, buried arc welding and laser welding.



Specification

Model	HZF-500	HZF-600	HZF-800	HZF-1200	HZF-1600	HZF-2000
Effective welding length	500mm	600mm	800mm	1200mm	1600mm	1600mm
Workpiece thickness	0.3-5mm	0.3-5mm	0.3-5mm	0.4-5mm	0.4-5mm	0.4-5mm
Minimum workpiece thickness	80mm	100mm	120mm	150mm	200mm	200mm
Welding speed	600-1500mm/min	600-1500mm/min	600-1500mm/min	600-1500mm/min	600-1500mm/min	600-1500mm/min
Operating voltage	AC 380V	AC 380V	AC 380V	AC 380V	AC 380V	AC 380V
Overall dimension	900x520x1200mm	1100x520x1250mm	1300x520x1250mm	1800x600x1350mm	2600x1000x1750mm	3000x1000x1800mm

COMBINED VARIABLE POSITION HZH

Characteristics

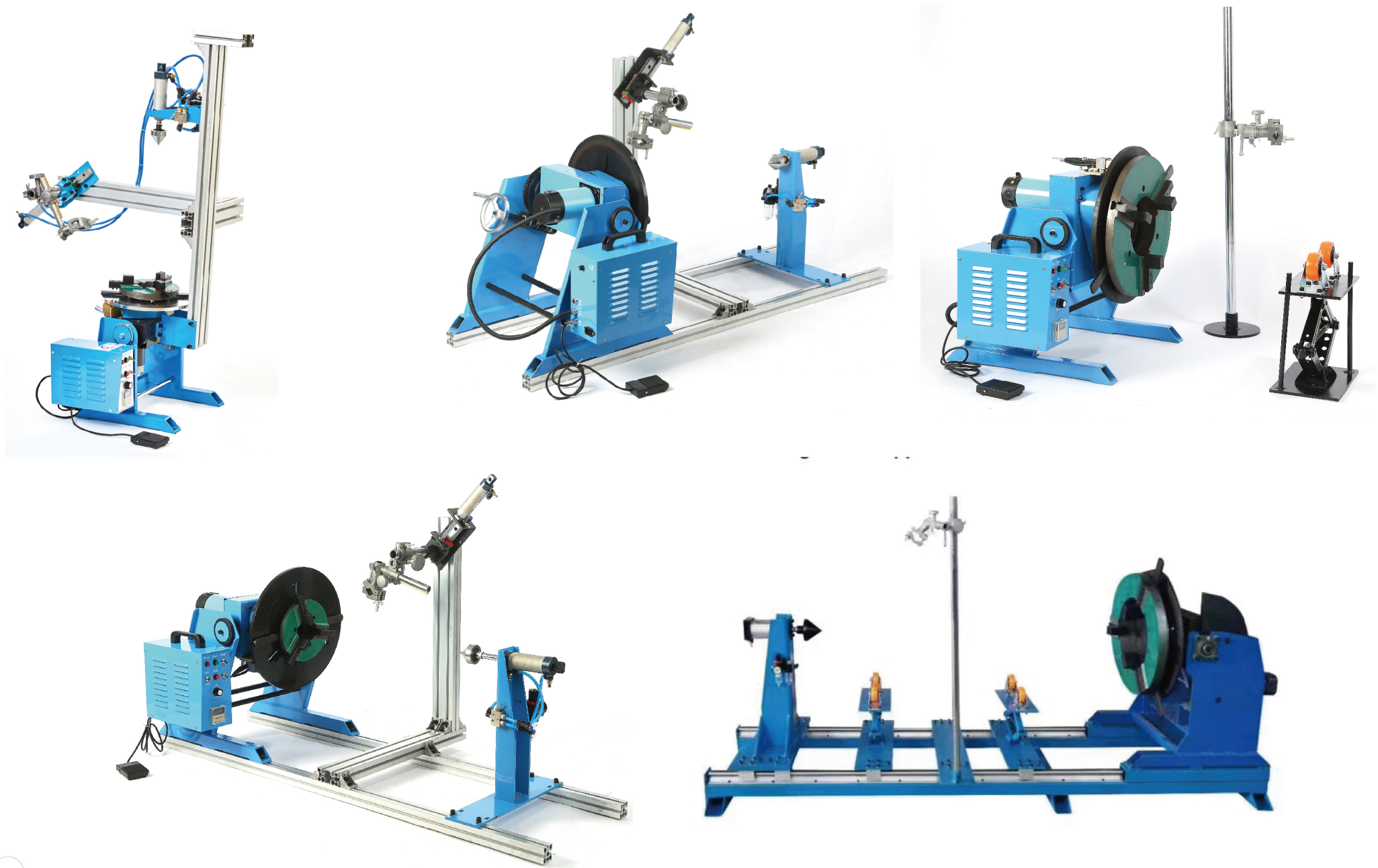
Combined type welding positioner is installed with welding chuck, welding torch holder, adjustable high support frame, pneumatic tailstock, based on the structure of welding positioner, which can satisfy customers' various requirement.

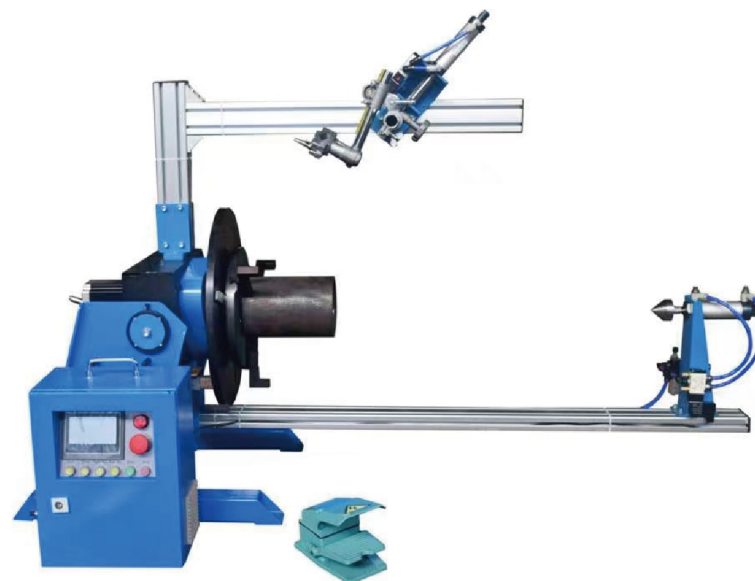
Synchronously positioned by following operation platform, the welding torch holder are flexible to direction adjustment up and down, left and right, forward and backward, as well as to angle adjustment for accurate seam alignment, which applies to different welding and cutting process. Welding positioner, there are ON/OFF knob, FORWARD / REVERSE knob, speed adjustable knob in control panel, after finishing adjusting, just need to press the relate knob to achieve automatic welding.

Main characteristics of combined type welding positioner:

- ◆ 1. The rotation structure is driven by dc/step motor, while stepless speed regulation can be achieved;
- ◆ 2. The turning structure of worm and gear has the function of self-lock, and the worktable can be turned steplessly between 0-90°;
- ◆ 3. Special design of anti-electromagnetic, which reduce the high frequency interference of TIG's welding, and can improve the welding quality effectively;
- ◆ 4. The controller can be furnished to control the working condition and working time, which can achieve the linkage of the positioner and welder;
- ◆ 5. The adjustable- welding torch holder can be furnished to fix the position of the welding torch;
- ◆ 6. The pneumatic tailstock can be furnished to keep both ends of the workpiece concentric.







COMBINED VARIABLE POSITION HZQ

Automatic rotating gun welding machine , also known as vertical circumferential welding machine, can weld circumferential seam with single axis or intersecting seam with double axis. This machine can be used for carbon steel, stainless steel, aluminum galvanized sheet and other materials, applicable to flange welding, pipe, elbow, outer wall surface joint, flange surface and can body welding, and can choose gas shielded welding, automatic argon arc welding, laser welding machine and other welder to form a set of circumferential seam automatic welding system. The adjustment mechanism can adjust the wire feeding position of the welding torch in all directions by rotating the welding torch to ensure the sealing of the welding process is firm. The welding speed can be adjusted by setting the plc screen

- ◆ 1. The automatic rotating gun welding machine can carry out vertical or horizontal welding for workpiece with different lengths and diameters, improving the efficiency of circumferential welding.
- ◆ 2. The welding platform shall be fixed on the main column during horizontal welding. The lifting and lowering of the whole workbench can be locked on different hole positions with nuts; The length can be determined according to the maximum length of the weldment. A number of semi-ring snap rings and right stop can be installed on the table to position the weldment together.
- ◆ 3. Fix the workpiece on the support during vertical welding. Similarly, the locking direction of the nut can be adjusted manually to limit the lifting; Move the locking position of the support on the pedestal to correspond to workpiece with different diameters.
- ◆ 4. After the workpiece is positioned, the air cylinder will compress the components after insertion or spot welding. The welding torch of the circumferential welding machine moves forward and backward with the top structure, and the angle position and distance from the weld shall be manually adjusted in advance; The rotation number of the welding torch ring is sensed by the origin, and it will return to its original position after completion.
- ◆ 5. The PLC control system and parameters are input on the touch screen, and the operation is easy. Interlocking foot start and hand start switches can be selected for quick operation during vertical or horizontal circumferential welding of workpiece.
- ◆ 6. The whole power system of horizontal circumferential welding machine is placed on the top, which only takes up more longitudinal space and frees up more space for the loading of workpiece Therefore, the volume of workpiece is required to be flexible.

